



ZESA DEFENSE TECHNOLOGIES

ZESA SAVUNMA TEKNOLOJİLERİ TİCARET LTD.ŞTİ.

www.zesasavunma.com.tr

info@zasavunma.com.tr

+90 212 916 16 99

İSTANBUL TÜRKİYE



PRESENTATION INDEX

MILITARY EQUIPMENT PRODUCTS



COMMANDO CLEANING AND HYGIENE PRODUCTS

- While cleaning the head and body without the need for water, it also provides antibacterial hygiene. (Protects against fungi and diseases)
- It provides cleaning and hygiene facilities in critical military areas where water is limited.
- It also provides effective use in the care of special patients.



LIGHTNING BLOCKING SYSTEM

- Lightning Prevention System
- It prevents the discharge by making the stations on which it is mounted immune against lightning
- 100% Turkish Engineering and Production
- 10 years product warranty
- No conductors required, mounts directly to the tower
- Does not require modifications to the grounding system
- Easy assembly with clamps
- Special application project for each tower
- Maintenance free



MILITARY PROFESSIONAL ARMED UAV

IMAGE	MODEL NAME	ZAMP 26
	HEIGHT	4,000 MET
	WEIGHT	1,800 KG
	WING SPAN	17.5 MET
	USP	60 KM/H
	MAX ALTITUDE	2000 MET
	ENCRYPTION	AAA 256 BIT ALG. 256
	NO TIME	200 MINUTE
	OPERATING TIME	10 HOURS
	USP/TA LOAD	1,500 KG - 4,000 KG
	THE COST BUDGET	8,000 USD
OPERATIONAL RANGE	20 KM	
NO WEAPON TRANSFER RANGE	20 KM	
VIRTUAL LAUNCH AND TARGET	YES	
OPERATING TIME	20 HOUR/DAY	

MILITARY PROFESSIONAL ARMED UAV

- Long range, specially equipped systems capable of reconnaissance and surveillance in bad weather conditions, day or night.
- Ability to drop ammunition on target when needed.
- Special design can be made upon request.



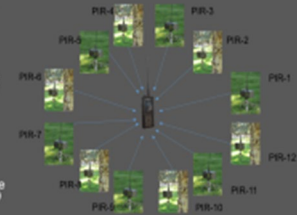
MILITARY THERMAL DRONE

- It is a new technology product that is produced against any kind of security risk, from low drone at 100 meters, cameras behind the corner, surveillance behind the building, and can instantly detect target coordinates with infrared camera.
- It can be installed when required, leaving no any gr. employees for the target and returning.
- It flight speed is at least 55 km/h.
- With the built-in autopilot, it can be used in the air in the control of GCS during development in the control of GCS.
- It can continue to work with the built-in radio module at 8000 meters and 1000 Hz tone.
- It is under protection with ICM sensors that detect any kind of violation.
- It features 2.2 GHz and 2.7 GHz frequencies, it can transmit images to the operator with frequency hopping AES-256 128-bit encryption.



MILITARY FIELD SPECIALLY EQUIPPED SENSOR SYSTEM

- Special sensor system for military purposes.
- Ability to transmit images that inform the operator when motion is detected.
- Possibility to illuminate the target with infrared, LED or white light available on it.
- Operator controllable explosive trigger function.
- Ability to work for months without intervention.
- Long range ability.
- Possibility of temporary use as a portable (8/12 pieces) set.



MOBILE OPERATING ROOM AND INTENSIVE CARE UNIT

- Surgery and intensive care unit in mobile vehicle.
- Completely independent use capability
- Complete units equipped to support any surgical procedure.



MOBILE MILITARY HOSPITAL

- A full-fledged hospital with all kinds of health equipment that may be needed in the military field.
- Production with 20-40/60-100 and 250 bed capacity. Expandable configuration as needed.
- It is mobile and can be deployed to different regions by moving in a short time when necessary.
- Each unit is completely independent from the outside. There is no need for electricity, water and infrastructure.



HIGH DEFINITION MULTI-SENSOR THERMAL & VISIBLE & LASER CAMERA SYSTEM

- High Definition Multi-sensor Night Vision System is the night vision product with independent intellectual property right, which integrates infrared thermal imaging camera and color camera. It adopts thermal imaging night vision technology, with features such as clear image, good concealment and being not limited by light source. Color camera and thermal imaging camera integrate effectively, the day vision distance of color camera 10km, night vision distance 4km and the detection distance to human of thermal imaging camera 5km, making day and night continuous monitoring.



PORTABLE ROAD BLOCKER

- It is used to provide controlled passage of vehicles of the Security and Control points of military, police, factories and shopping malls.
- It does not require maintenance, installation, construction, 1 hour to assemble, 15 minutes to disassemble.
- Vehicle formations are easily managed by remote control with the camera on it, the normal state of the vehicle and the bottom image of the vehicle passing over it are transferred to the monitor at the control point.
- If the vehicle entering the Road Blocker does not stop, the monitor will be damaged.



ARMOR AND OBSTACLE SYSTEMS





ZESA DEFENSE TECHNOLOGIES

MILITARY EQUIPMENT PRODUCTS



MILITARY EQUIPMENT PRODUCTS



MADE IN TÜRKİYE



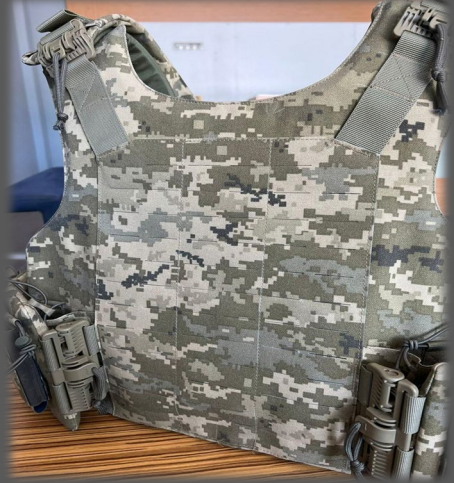
MILITARY EQUIPMENT PRODUCTS



MADE IN TÜRKİYE



MILITARY EQUIPMENT PRODUCTS



MADE IN TÜRKİYE



ZESA DEFENSE TECHNOLOGIES

**COMMANDO CLEANING AND HYGIENE
PRODUCTS**



COMMANDO CLEANING AND HYGIENE PRODUCTS

- While cleaning the head and body without the need for water, it also provides antibacterial hygiene. (Protects against fungi and diseases)
- It provides cleaning and hygiene facilities in critical military areas where water is limited.
- It also provides effective use in the care of special patients.

ANTIBACTERIAL AND ANTIFUNGUCIDAL BODY CARE GROUP



MADE IN TÜRKİYE



COMMANDO CLEANING AND HYGIENE PRODUCTS

ANTIBACTERIAL AND ANTIFUNGUSIDAL HAIR WASH CAP

USAGE AREAS

In areas where water supply is a problem, a hair washing head is used for hair cleaning.

PRODUCT PROPERTIES

- Antibacterial cleaning for hair and scalp.
- Anti-fungicide.
- Anti-irritant.
- Latex, lanolin, alcohol free.
- Cleans, softens and soothes.
- Does not require extra rinsing and drying after use.
- Nourishes and moisturizes, the skin with vitamin E, vitamin B, aloe vera and phospholipids.
- Protects against microorganisms thanks to Sodium Benzoate and Potassium Sorbate.
- Prevents bacteria with Chlorhexidine Digluconate.
- Paraben free.

USAGE

Applied in the form of massage and wiping.

ANTIBACTERIAL AND ANTIFUNGUCIDAL BODY CARE GROUP



MADE IN TÜRKİYE



COMMANDO CLEANING AND HYGIENE PRODUCTS

ANTIBACTERIAL AND ANTIFUNGUSIDAL WASH GLOVES

USAGE AREAS

- Washing gloves are used for general cleaning of the body area in areas where water supply is a problem.

PRODUCT PROPERTIES

- Total body cleaning with antibacterial effect within 10 minutes.
- Anti-fungicide.
- Anti-irritant.
- Latex, lanolin, alcohol free.
- Cleans, soften and soothes.
- Does not require extra rinsing and drying after use.
- Nourishes and moisturizes, the skin with vitamin E, vitamin B, aloe vera and phospholipids.
- Protects against microorganisms thanks to Sodium Benzoate and Potassium Sorbate.
- Prevents bacteria with Chlorhexidine Diguconate

USAGE

- Applied in the form of wiping the body.

ANTIBACTERIAL AND ANTIFUNGUCIDAL BODY CARE GROUP



MADE IN TÜRKİYE



COMMANDO CLEANING AND HYGIENE PRODUCTS

ANTIBACTERIAL AND ANTIFUNGUSIDAL SPECIAL AREA CLEANSING WIPES

USAGE AREAS

Used for wiping the special area and body.

PRODUCT PROPERTIES

- Anti-fungicide.
- Anti-irritant.
- Latex, lanolin, alcohol free.
- Cleans, soften and soothes.
- Does not require extra rinsing and drying after use.
- Nourishes and moisturizes, the skin with vitamin E, vitamin B, aloe vera and phospholipids.
- Protects against microorganisms thanks to Sodium Benzoate and Potassium Sorbate.
- Prevents bacteria with Chlorhexidine Digluconate.

USAGE

Applied in the form of wiping the special area and body.

ANTIBACTERIAL AND ANTIFUNGUCIDAL BODY CARE GROUP



MADE IN TÜRKİYE



ZESA DEFENSE TECHNOLOGIES

LIGHTNING BLOCKING SYSTEM



LIGHTNING BLOCKING SYSTEM

- Lightning Prevention System
- It prevents the discharge by making the structure on which it is mounted invisible against lightning.
- 100% Turkish Engineering and Production
- 10 years product warranty
- No conductors required, mounts directly to the tower
- Does not require modifications to the grounding system
- Easy assembly with clamps
- Special application project for each tower
- Maintenance free



MADE IN TÜRKİYE



ZESA DEFENSE TECHNOLOGIES

MILITARY PROFESSIONAL ARMED UAV




MILITARY PROFESSIONAL ARMED UAV

IMAGE	MODEL NAME	ZSKP-20
	WEIGHT	4.000 gr.
	WIDTH	140 cm
	HEIGHT	30 cm
	WING WIDTH	170 cm.
	SPEED	60 Knot
	MAX ALTITUDE	6000 feet
	ENCRYPTION	SHA-256 ACTIVE KEY, AES-256
	AIR TIME	200 dakika
	CHARGING TIME	30 dakika
	USEFUL LOAD	3.500 gr. – 4.000 gr.
	TAKE-OFF WEIGHT	8.000 gr.
	OPERATIONAL RANGE	20 km
	HD VIDEO TRANSFER RANGE	20 km
	VERTICAL LANDING AND TAKING (Optional)	Yes
	TERMINAL TIME	30 work day

MADE IN TÜRKİYE




MILITARY PROFESSIONAL ARMED UAV

IMAGE	MODEL NAME	ZSKP-80
	WEIGHT	4.700 gr.
	WIDTH	140 cm
	HEIGHT	30 cm
	WING WIDTH	170 cm.
	SPEED	60 Knot
	MAX ALTITUDE	6000 feet
	ENCRYPTION	SHA-256 ACTIVE KEY, AES-256
	AIR TIME	200 dakika
	CHARGING TIME	30 dakika
	USEFUL LOAD	2.500 gr. – 3.000 gr.
	TAKE-OFF WEIGHT	8.000 gr.
	OPERATIONAL RANGE	80 km
	HD VIDEO TRANSFER RANGE	80 km
	VERTICAL LANDING AND TAKING (Optional)	Yes
	TERMINAL TIME	30 work day

MADE IN TÜRKİYE




MILITARY PROFESSIONAL ARMED UAV

IMAGE	MODEL NAME	ZSKP -150
	WEIGHT	5.250 gr.
	WIDTH	140 cm
	HEIGHT	30 cm
	WING WIDTH	170 cm.
	SPEED	60 Knot
	MAX ALTITUDE	6000 feet
	ENCRYPTION	SHA-256 ACTIVE KEY, AES-256
	AIR TIME	200 dakika
	CHARGING TIME	30 dakika
	USEFUL LOAD	2.500 gr.
	TAKE-OFF WEIGHT	8.000 gr.
	OPERATIONAL RANGE	150 km
	HD VIDEO TRANSFER RANGE	150 km
	VERTICAL LANDING AND TAKING (Optional)	Yes
	TERMINAL TIME	30 work day


MADE IN TÜRKİYE

MILITARY PROFESSIONAL ARMED UAV

IMAGE	MODEL NAME	ZSKP -200
	WEIGHT	5.250 gr.
	WIDTH	140 cm
	HEIGHT	30 cm
	WING WIDTH	170 cm.
	SPEED	60 Knot
	MAX ALTITUDE	6000 feet
	ENCRYPTION	SHA-256 ACTIVE KEY, AES-256
	AIR TIME	200 dakika
	CHARGING TIME	30 dakika
	USEFUL LOAD	2.500 gr.
	TAKE-OFF WEIGHT	8.000 gr.
	OPERATIONAL RANGE	200 km
	HD VIDEO TRANSFER RANGE	200 km
	VERTICAL LANDING AND TAKING (Optional)	Yes
	TERMINAL TIME	30 work day




MILITARY PROFESSIONAL ARMED UAV

IMAGE	MODEL NAME	ZSKD-20/25	
	WEIGHT	30.250 gr.	
	WHEEL DISTANCE	150 cm	
	NUMBER OF WING ARM/ PROPELLER	4 ARMS / Double Propellers	
	SPEED	60 Knot	
	MAX ALTITUDE	3000 feet	
	ENCRYPTION	SHA-256 ACTIVE KEY, AES-256	
	AIR TIME	90 Mn	
	CHARGING TIME	30 Mn	
	USEFUL LOAD	25.000 gr. -30.000 gr.	
	TAKE-OFF WEIGHT	70.000 gr.	
	OPERATIONAL RANGE	20 km	
	HD VIDEO TRANSFER RANGE	20 km	
	OPERATING TEMPERATURE	-20 C ⁰ – 50 C ⁰	
	TERMINAL TIME	30 Work day	

MADE IN TÜRKİYE



MILITARY PROFESSIONAL ARMED UAV

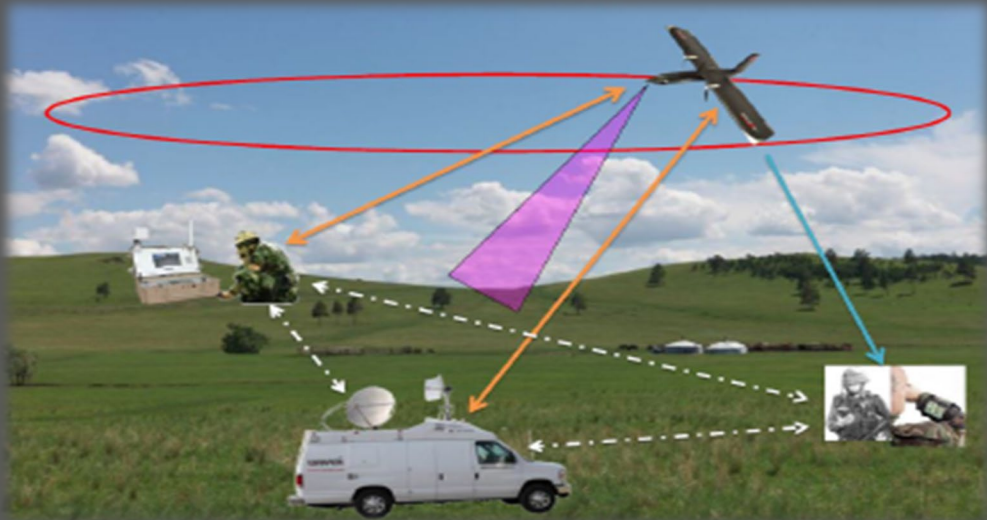
IMAGE	MODEL NAME	ZSKD-20/50
	WEIGHT	45.000 gr.
	WHEEL DISTANCE	150 cm
	NUMBER OF WING ARM/ PROPELLER	4 ARMS / Double Propellers
	SPEED	60 Knot
	MAX ALTITUDE	3000 feet
	ENCRYPTION	SHA-256 ACTIVE KEY, AES-256
	AIR TIME	90 Mn
	CHARGING TIME	30 Mn
	USEFUL LOAD	50.000 gr.
	TAKE-OFF WEIGHT	120.000 gr.
	OPERATIONAL RANGE	20 km
	HD VIDEO TRANSFER RANGE	20 km
	OPERATING TEMPERATURE	-20 C ⁰ – 50 C ⁰
	TERMINAL TIME	30 Work day

MADE IN TÜRKİYE



MILITARY PROFESSIONAL ARMED UAV

- Long range, specially equipped systems capable of reconnaissance and surveillance in bad weather conditions, day or night.
- Ability to drop ammunition on target when needed.
- Special design can be made upon request.



MADE IN TÜRKİYE



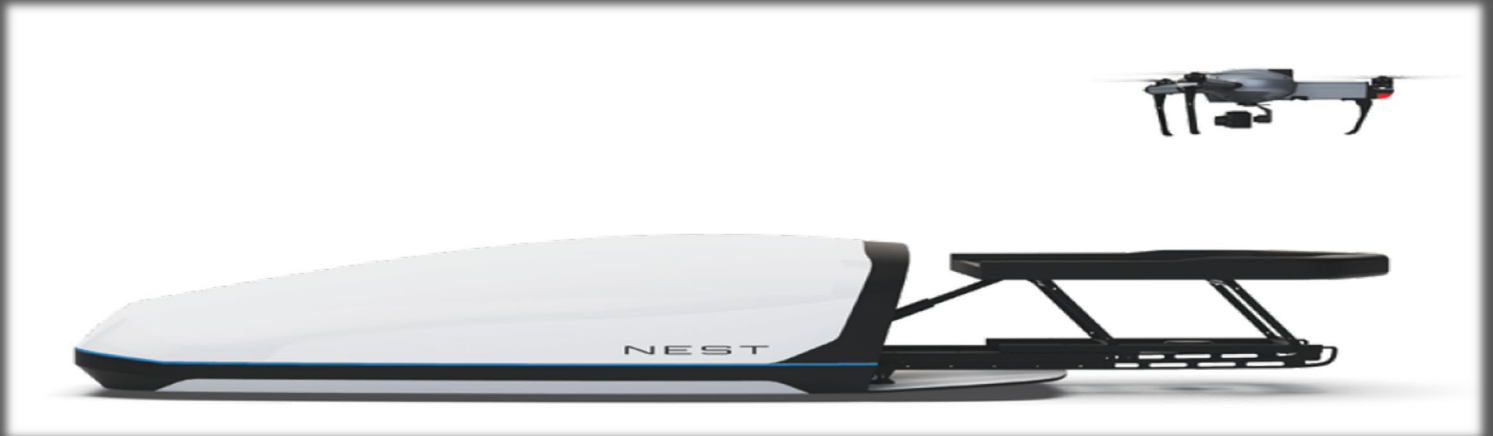
ZESA DEFENSE TECHNOLOGIES

MILITARY THERMAL UAV (DRONE)



MILITARY THERMAL DRONE

- It is a new technology product that is protected against drones in the military field, can fly autonomously, can operate with more than one drone at the same time, can work behind the suture (mountain or behind the building), and can instantly detect target coordinates with a thermal camera.
- It can be modified when requested, leaving 300-400 gr explosives to the target and returning.
- The flight speed is at least 55 Km/h.
- With the built-in parachute, it has the ability to land in a negative situation without being damaged in the event of a fall.
- It can continue to work with the built-in radio module at 8500 meters and fulfill its task.
- It is under protection with LIDAR sensors that detect 25 meters of obstacles.
- Between 2.2 GHz and 2.7 GHz frequencies, it can transmit instant HD video to the operator with frequency hopping AES 256 internal crypto.





MILITARY THERMAL DRONE

- [?] With its 640x512 VOx sensor, radiometric thermal camera with a sensitivity of less than 50 mk, it can easily detect targets even at night.
- [?] The drone can stay in the air for at least 30 minutes with its built-in radiometric advanced thermal camera or at least 20X optical zoom advanced day camera, built-in FPV camera and parachute.
- [?] The coordinates of the targets (the point where the cameras are looking) can be displayed as MGRS on the ground station.





MILITARY THERMAL DRONE

- The NEST System is a cutting-edge technology product that allows the drone to turn and land autonomously when its battery is low during the mission, without the need for operator intervention, where it can autonomously replace its battery, return to the mission area and continue its activities.
- When the battery of the drone patrolling in a certain route is low, the drone waiting at NEST autonomously takes its place and continues its mission. The other drone returns to NEST, changes its battery and waits for the mission.
- In this way, it is possible to continue the task 24/7 without interruption.





UAV DEFENSE SYSTEM

- Perfect design for all types of drone detection and destruction.
- Long distance detection and tracking with active radars.
- Being able to detect identity and communication parameters with passive sensors.
- Automatic optical tracking in day and night conditions with advanced thermal cameras.
- Ability to destroy target drones by dropping them.



Drone Detection with Radar and PTZ Camera

SCREENCAST

Extended deployment

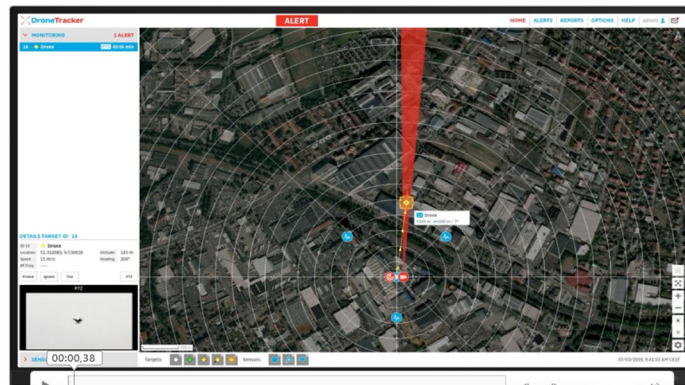
3 RF-300 / 1 RF-160

1 Radar

1 PTZ camera

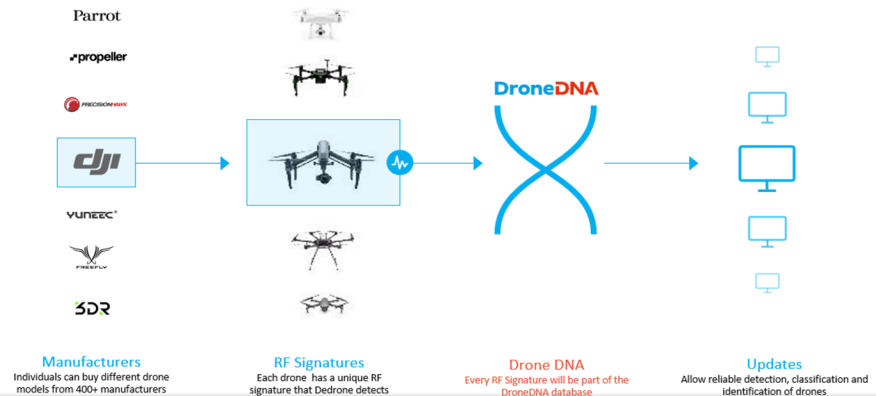
1 Drone detected

Click display to start video



Drone DJI Phantom 4

Largest database of Drones in the World





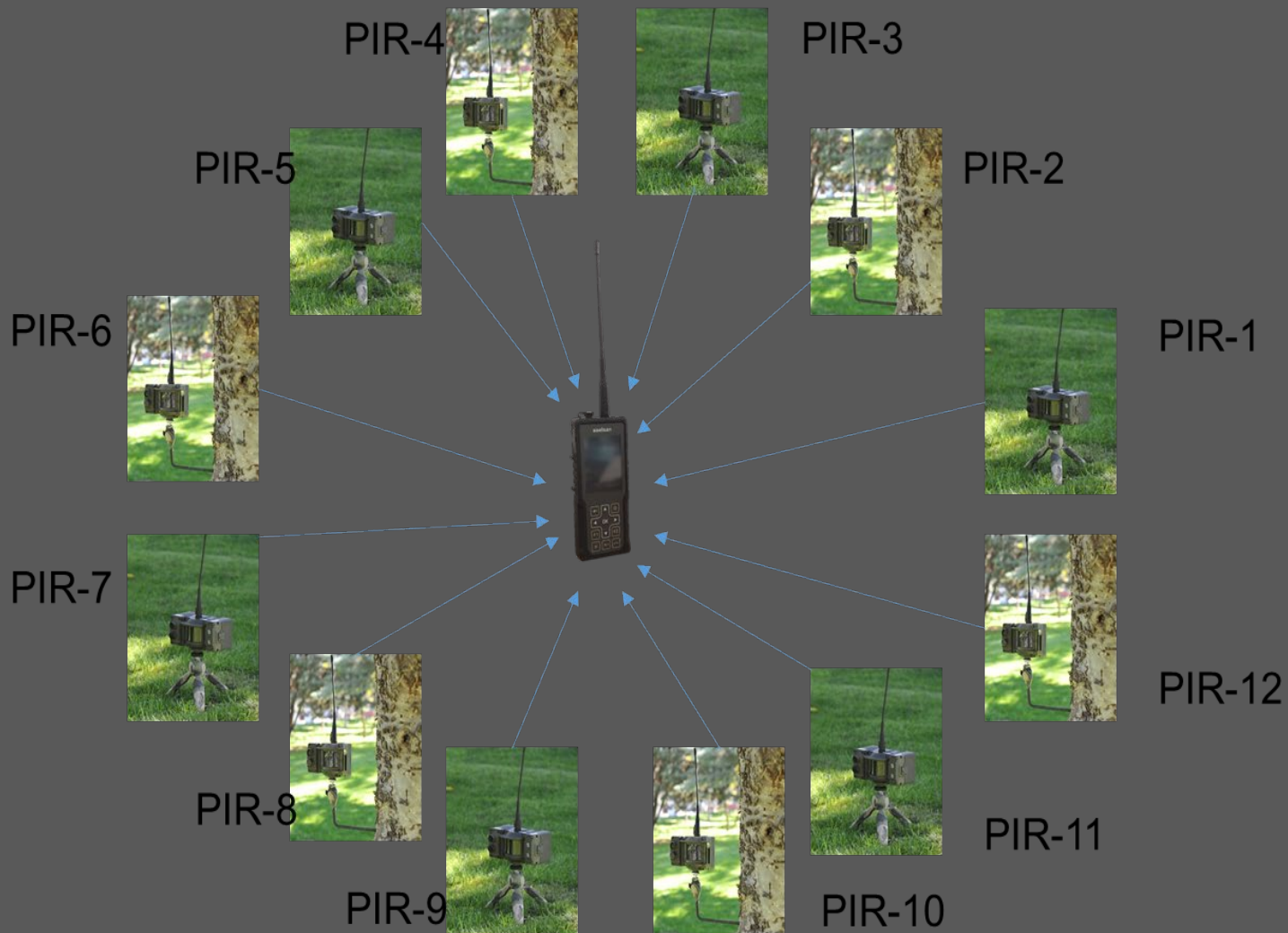
ZESA DEFENSE TECHNOLOGIES

**MILITARY FIELD SPECIALLY
EQUIPPED SENSOR SYSTEM**



MILITARY FIELD SPECIALLY EQUIPPED SENSOR SYSTEM

- Special sensor system for military purposes.
- Ability to transmit images that inform the operator when motion is detected.
- Possibility to illuminate the target with infrared LED or white light available on it.
- Operator controllable explosive trigger function.
- Ability to work for months without intervention.
- Long range ability.
- Possibility of temporary use as a portable (8/12-pieces) set.



Early Warning System With PIR Sensor

zesa



Low power consumption



Military standards (MIL-STD-810G)



LoRa communication



Different communication choices



Motion detection algorithm



Easy Installation



Mobile or fixed use



Image capture



Camouflaged structure



Movement Detection

It detects moving vehicles and living things in a wide area.



Snapshot

It automatically takes and saves a photo as soon as motion is captured. Depending on the usage scenario, the photo is sent automatically or upon user request. It also takes and sends snapshots at the request of the user.



Data Transfer over LoRa

Information about motion detection is wirelessly transmitted to the Gateway.



Data

Handheld terminal presents the motion information and photos from the sensors to the user with its easy-to-use interface. Movement information and photos coming to the Gateway are transmitted to the user's computer over various communication protocols.



Geolocation

When the sensors are deployed in their places, their location information is recorded with the Handheld Terminal. This location information enables the sensors to be easily found later with the router in the Handheld Terminal interface. The location information on the Hand Terminal can also be transferred to the system via the Gateway.



TECHNICAL SPECIFICATIONS

Configuration:

- ▶ Mobile (Military unit) (Flexible use)
- ▶ Fixed facility (Longer battery life)

Communication and Control:

- ▶ Wireless LoRa (8km communication range)
- ▶ Channel selection capability (10 channel)
- ▶ Mobile (Military unit): Control via hand terminal
- ▶ Fixed facility: Communication through gateway (4G LTE, Ethernet) and control by computer

Sensing:

- ▶ Motion detection
- ▶ Wide detection area
- ▶ Long detection distance
- ▶ Adjustable detection sensitivity

Mounting:

- ▶ Mini tripod usage on the ground
- ▶ Easy mounting with tree mount
- ▶ Suitable for camouflage

Battery:

- ▶ Mobile (Military unit) (Flexible usage): 1 Month
- ▶ Fixed facility (longer battery life): 1 year
- ▶ Replaceable batteries.
- ▶ Handheld Terminal with rechargeable battery

Environmental Properties:

- ▶ -20°C/ +60°C (MIL-STD-810)
- ▶ Operation up to 90% humidity
- ▶ IP65 sealing

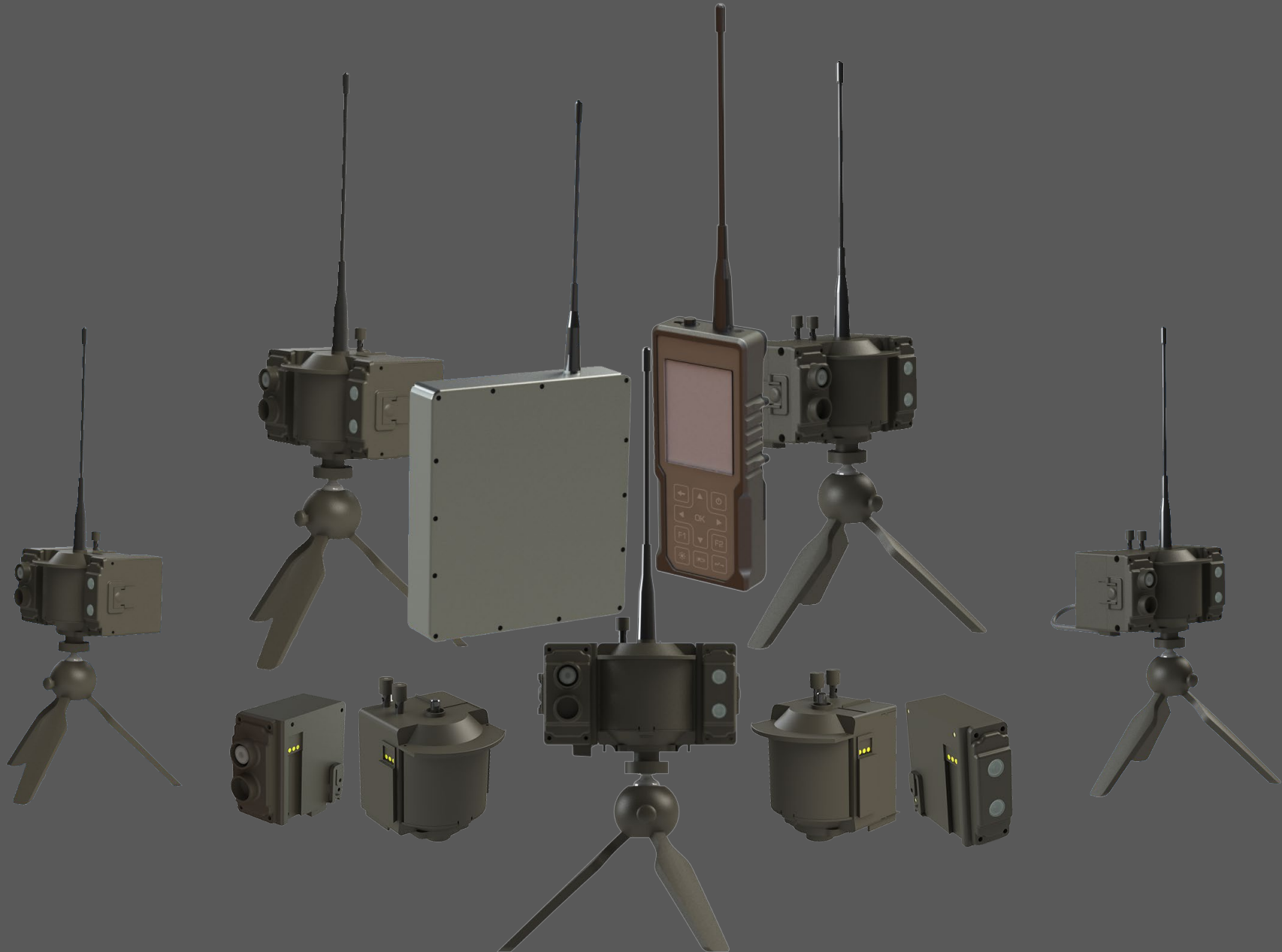
Remote Use:

- ▶ Many devices and equipment can be triggered by the contacts on it



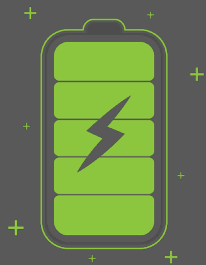


Early Warning System With PIR Sensor





Our Technologies



Low Power



Camouflage
Design

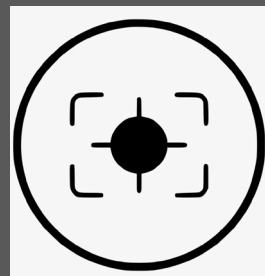


Image
Capture



LoRa
Communication



Military Standards



Easy Set-up



Operation Flow Chart

- **Motion Detection** It detects moving creatures and vehicles in a wide area thanks to its advanced algorithm.
- **Take a Photo** Automatically captures and saves a photo when motion is captured. According to the usage scenario, it sends it automatically or when the user requests it. At the request of the user, it takes snapshots, saves and sends them.
- **Transmission via LoRa** It wirelessly transmits the detected motion information to the Hand Terminal or Gateway via LoRa.
- **Presenting To The User Or To Other Networks** Detection information and photos from the sensors are presented to the users with an easy user interface. Detection information and photos coming to the Gateway are transmitted to the user over various communication protocols.
- **Determination of Location** While the sensors are placed in their places of duty, location information is recorded with the Hand Terminal. It enables the sensors to be easily found later with this location information with to the router on the Hand Terminal interface. Location information can be transferred to the system via Gateway via Hand Terminal.



Technical Specifications

- **Configuration**
 - Mobile (Military unit) (Flexible use), Fixed Facility (Longer battery life)
- **Communication and Control**
 - Wireless LoRa (Line of Sight 8km communication range)
 - Channel selection capability (10 channel)
 - Mobile (Military unit): Control via hand terminal
 - Fixed facility: Communication through gateway(Ethernet) and control by computer
- **Sensing**
 - Motion detection
 - Wide detection area (100°)
 - Long detection distance (25m)
 - Adjustable detection sensitivity (10 level)
- **Mounting**
 - Mini tripod usage on the ground
 - Easy mounting with tree mount
 - Suitable for camouflage



Battery

- Mobile (Military Unit) (Flexible usage) 1 Month
- Fixed facility (longer battery life): 1 year
- Replaceable rechargeable and non-rechargeable batteries
- Handle Terminali with rechargeable battery

- **Environmental Properties**
 - -20 °C / +60 °C (MIL-STD-810) for work, -30 °C / +70 °C (MIL-STD-810) for storage, Operation up to %90 humidity, IP65 sealing, MIL-STD-810G-514-6: Loose Cargo Transportation

 - MIL-STD-810G-516.6: Transit Drop Test

 - MIL-STD-810G-508.6(28 days):Fungus Test

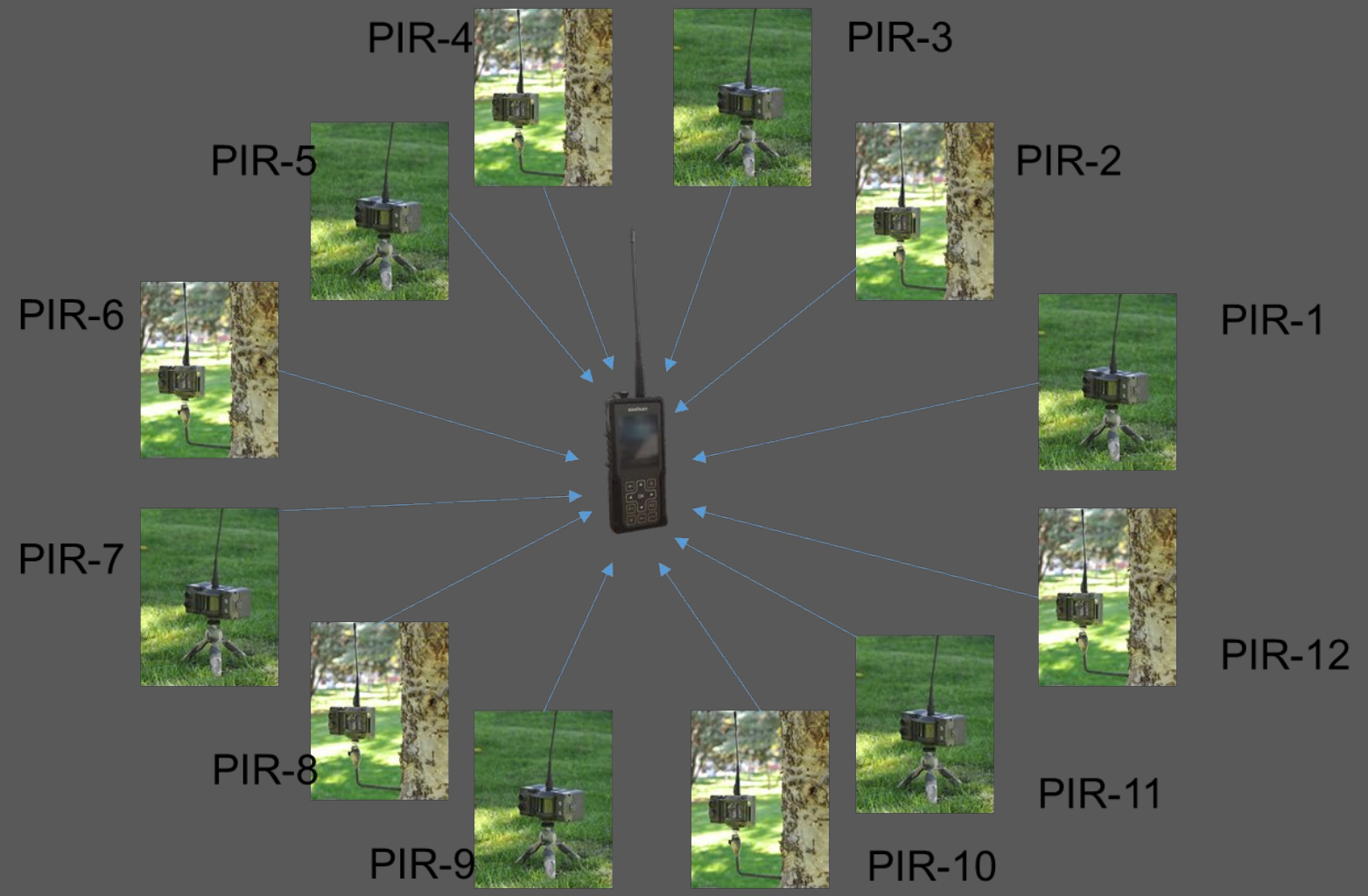
 - MIL-STD-810G-500.5:Low Pressure Altitude Test

 - MIL-STD-810G-505.5: Solar Radiation Test

 - MIL-STD-810G-503.5: Temperature Shock Test



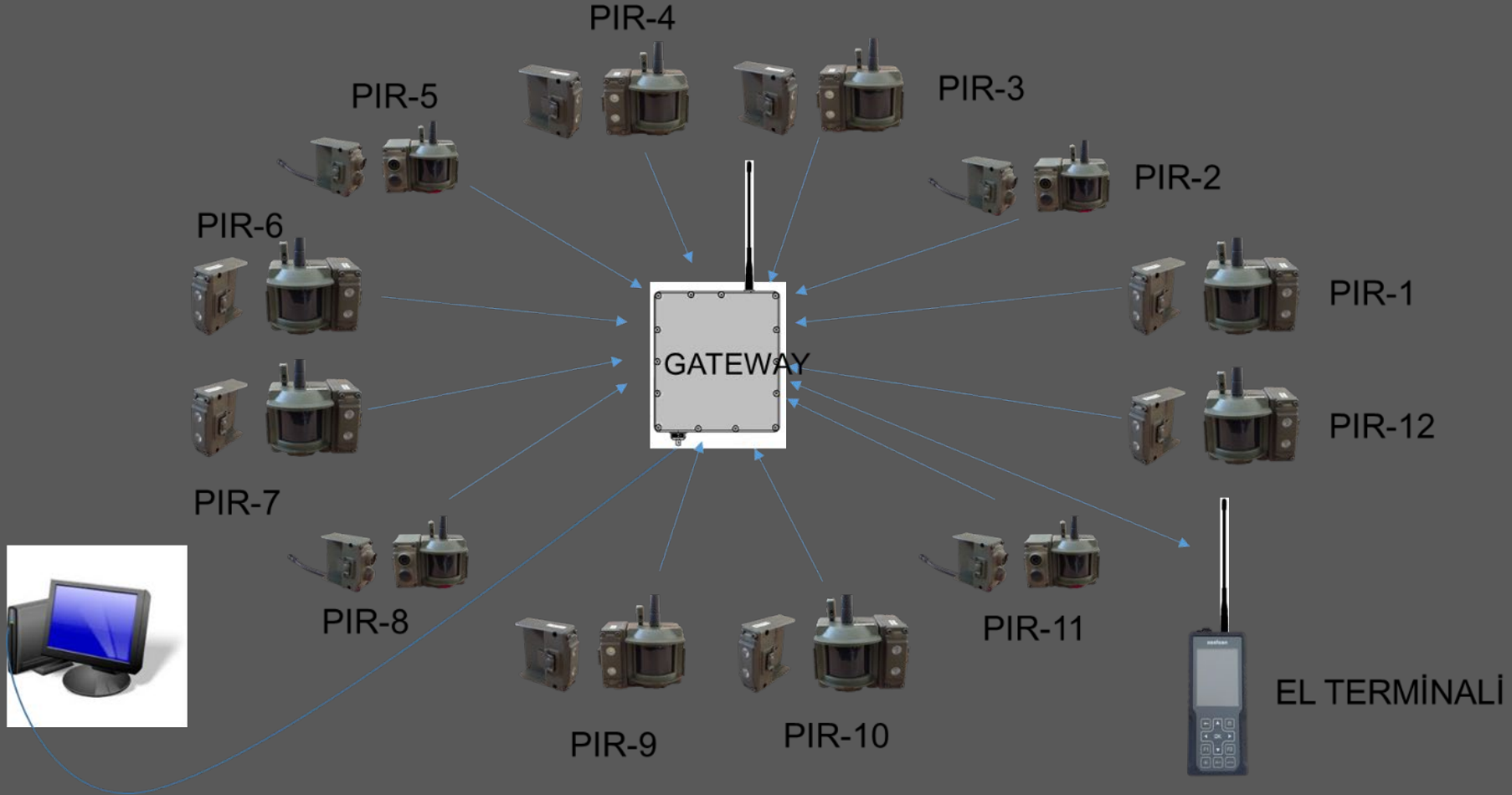
Mobile Usage with Hand Terminal





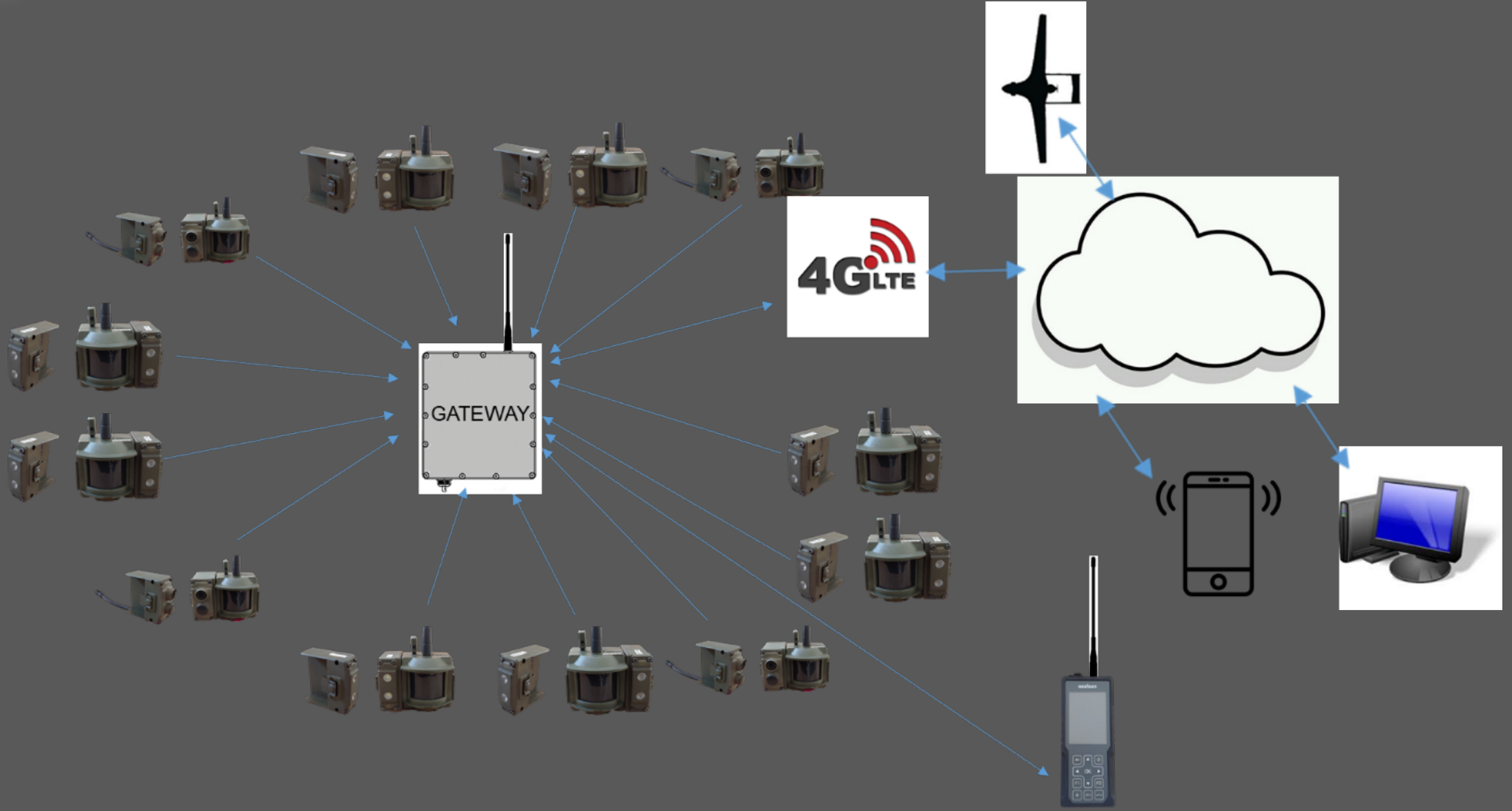
Usage Scenarios

Usage with Gateway over Ethernet Network





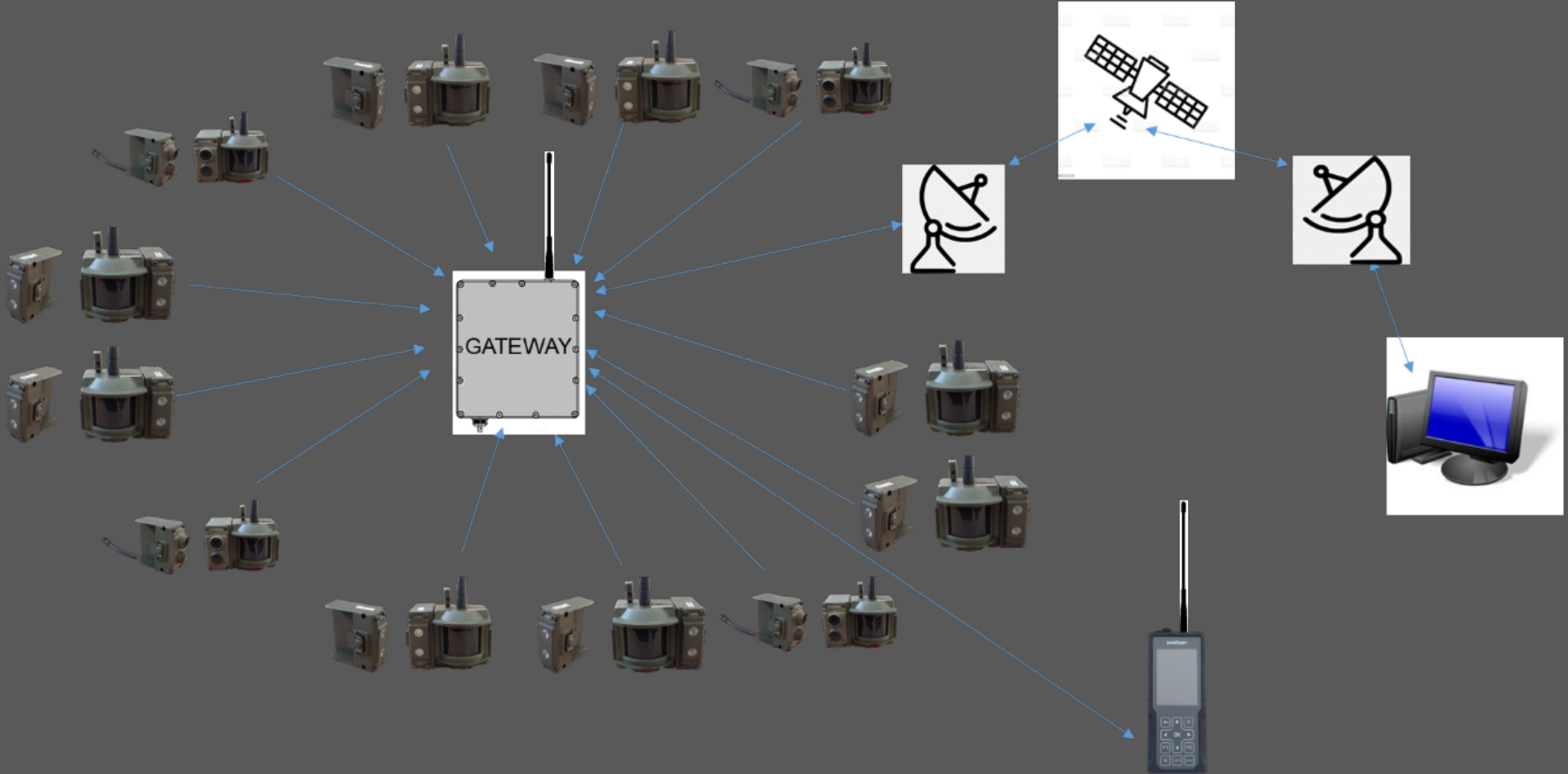
Usage over 4G(LTE) Network with Gateway



MADE IN TÜRKİYE



Usage via Satellite over Gateway



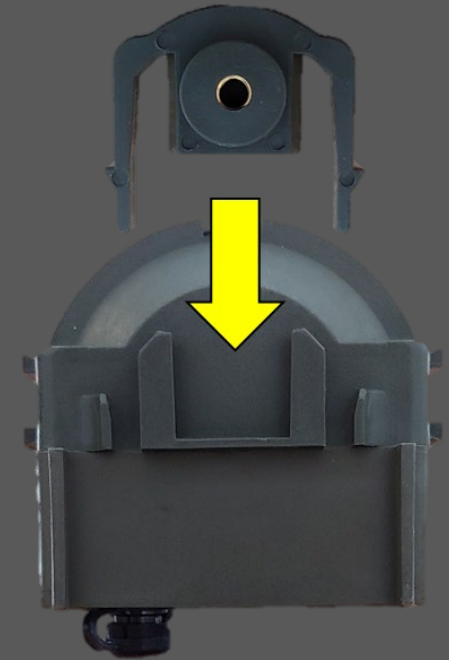
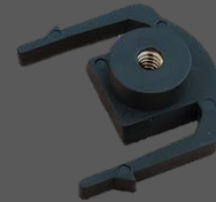
MADE IN TÜRKİYE



Accessories

- **Mounting kits**

The PIR Sensor is attached to the mounting kits with the mounting clip. First of all, the mounting clip is attached to the mounting kits to be used by turning it clockwise. Then the mounting clip is placed on the mounting rail under the PIR Sensor.





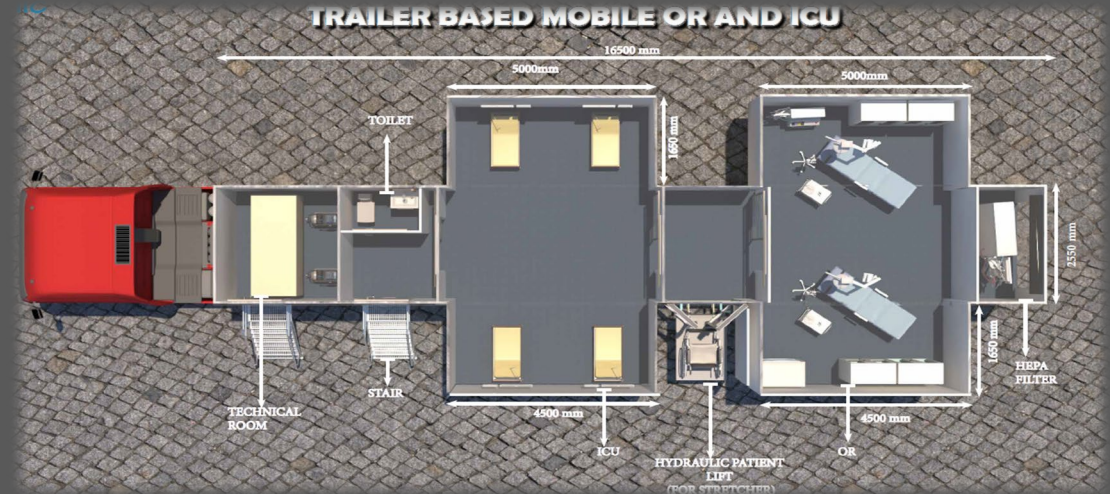
ZESA DEFENSE TECHNOLOGIES

**MOBILE OPERATING ROOM AND
INTENSIVE CARE UNIT**



MOBILE OPERATING ROOM AND INTENSIVE CARE UNIT

- Surgery and intensive care unit in mobile vehicle.
- Completely independent use capability
- Complete units equipped to support any surgical procedure.



MADE IN TÜRKİYE

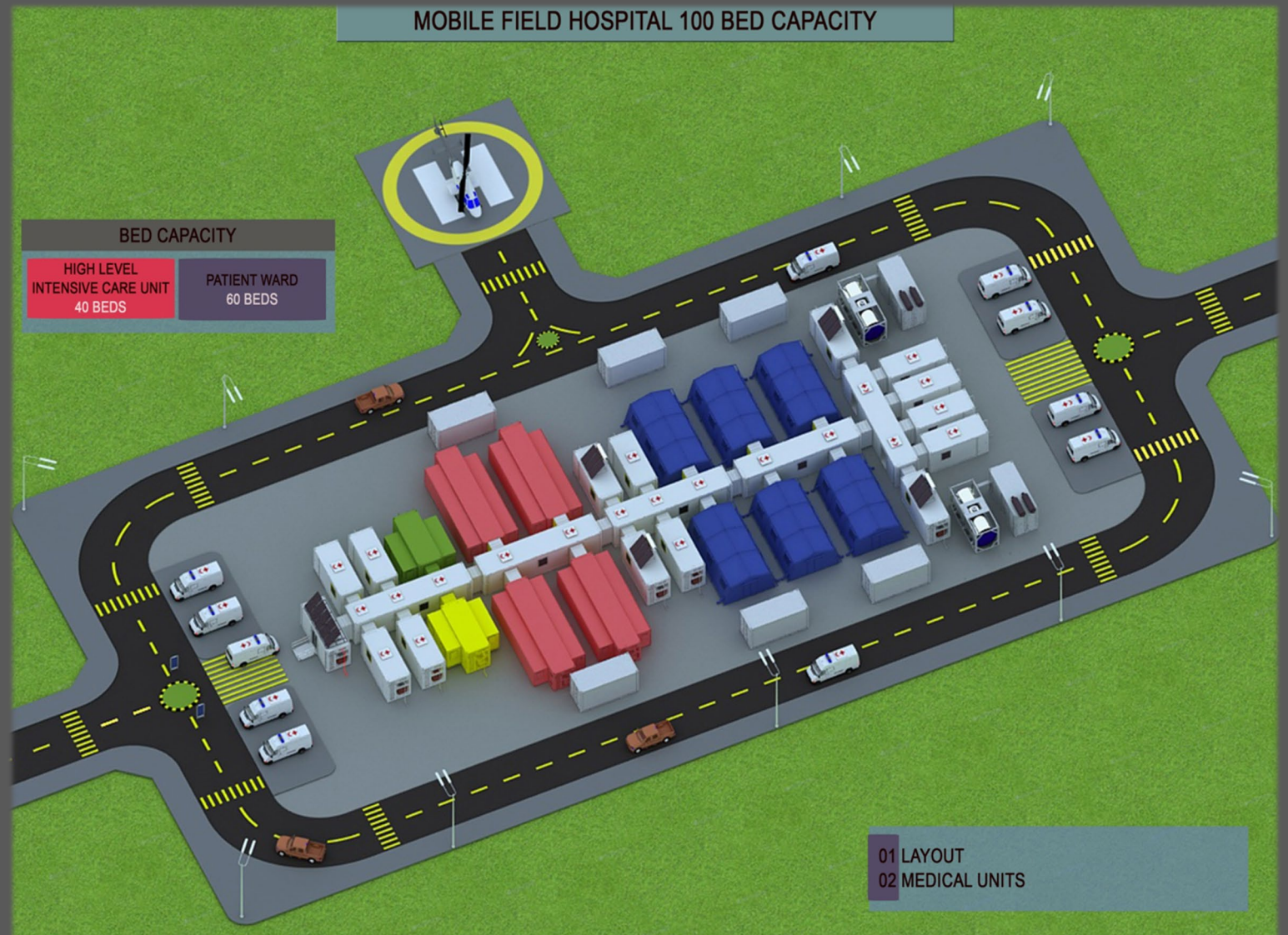


ZESA DEFENSE TECHNOLOGIES

MOBILE MILITARY HOSPITAL

MOBILE MILITARY HOSPITAL

- A full-fledged hospital with all kinds of health equipment that may be needed in the military field.
- Production with 20/40/60/100 and 250 bed capacity. Expandable configuration as needed.
- It is mobile and can be deployed to different regions by moving in a short time when necessary.
- Each unit is completely independent from the outside. There is no need for electricity, water and infrastructure.



MOBILE FIELD HOSPITAL for 24BEDS CAPACITY

02 MEDICAL UNITS

01 - RECEPTION	(40 FEET CONTAINER) - 1 piece
02 - MANAGEMENT	(40 FEET CONTAINER) - 1 piece
03 - COMMUNICATION UNIT	(40 FEET CONTAINER) - 1 piece
04 - LABORATORY	(40 FEET CONTAINER) - 1 piece
05 - PHARMACY	(40 FEET CONTAINER) - 1 piece
06 - EMERGENCY and TRIAGE UNIT	(40 FEET CONTAINER) - 1 piece
07 - RADIOLOGY UNIT	(40 FEET CONTAINER) - 1 piece
08 - ENDOSCOPY UNIT	(40 FEET CONTAINER) - 1 piece
09 - WC (FEMALE)	(20 FEET CONTAINER) - 3 pieces
10 - WC (MALE)	(20 FEET CONTAINER) - 3 pieces
11 - SHOWER (FEMALE)	(20 FEET CONTAINER) - 3 pieces
12 - SHOWER (MALE)	(20 FEET CONTAINER) - 3pieces
13 - TOMOGRAPHY and MR	(40 FEET CONTAINER) - 2 pieces
14 - ULTRASOUND UNIT	(40 FEET CONTAINER) - 2 pieces
15 - DOCTOR ROOM	(20 FEET CONTAINER) - 5 pieces
16 - SURGERY UNIT	(40 FEET CONTAINER) - 6 pieces
17 - KITCHEN	(20 FEET CONTAINER) - 2 pieces
18- CANTEEN	(40 FEET CONTAINER) - 2 pieces
19- INTENSIVE CARE UNIT	(40 FEET CONTAINER) - 10 pieces
20- PATIENT WARD	(40 FEET CONTAINER) - 10 pieces
21- LAUNDRY	(20 FEET CONTAINER) - 2 pieces
22- STAFF DRESSING UNIT	(20 FEET CONTAINER) - 3 pieces
23- STAFF ACCOMMODATION UNIT	(TENT) - 10 pieces
24- MORGUE UNIT	(40 FEET CONTAINER) - 2 pieces
25- STERILIZATION UNIT	(40 FEET CONTAINER) - 1 piece
26- UPS	(40 FEET CONTAINER) - 1 piece
27- TECHNICAL UNIT	(40 FEET CONTAINER) - 2 pieces

28 - ELECTRIC / POWER SUPPLY / GENERATOR	(40 FEET CONTAINER) - 2 pieces
29 - WATER TREATMENT	(40 FEET CONTAINER) - 2 piece
30- GAS RESERVE	(40 FEET CONTAINER) - 2 pieces
31 - MATERIAL SUPPLY UNIT	(40 FEET CONTAINER) - 2 pieces
32 - WAREHOUSE FOR MEDICAL DEVICES	(40 FEET CONTAINER) - 1 piece
33 - MEDICINE SUPPLY UNIT	(40 FEET CONTAINER) - 2 pieces



A - BIG CORRIDOR	(40 FEET CONTAINER) - 14pieces
B - SMALL CORRIDOR	(20 FEET CONTAINER) - 7 pieces

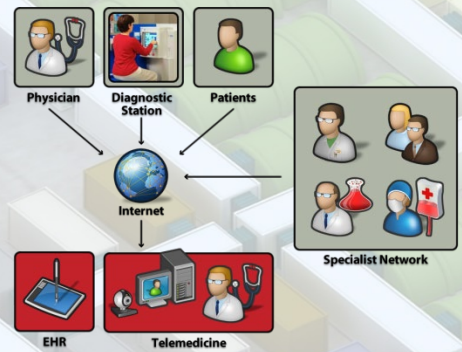


03- COMMUNICATION UNIT

03 - COMMUNICATION UNIT (40 FEET CONTAINER)	
FLOOR	PVC 2 mm Anti bacterial-Static
WINDOW	PVC Double Glassed Window
A / C	Air Conditioner
LIGHTING	2 lamps (2x36W each) Waterproof/Dust Proof Housing
SMOKE DETECTOR, FIRE EXTINGUISHER,	

EQUIPMENT	QTY.	ORIGIN
TABLE and CHAIR	3	TURKEY
WAITING CHAIRS	3	TURKEY
COMPUTER, CHAIRS, DESK AND DRAWERS	3	TURKEY

We supply a full PROGRAM Installation from the beginning units to other units. Hospital Management System



This systems enable the ability to provide interactive healthcare utilizing modern technology and telecommunications

HOSPITAL MANAGEMENT SYSTEM

DOCTOR patient info form SEARCH APPOINTMENT login form



04- LABORATORY

04 –LABORATORY (40 FEET CONTAINER)	
FLOOR	PVC 2 mm Anti bacterial-Static
WINDOW	PVC Double Glassed Window
A / C	Air Conditioner
LIGHTING	2 lamps (2x36W each) Waterproof/Dust Proof Housing
SMOKE DETECTOR, FIRE EXTINGUISHER,	



EQUIPMENT	QTY	ORIGIN
BASIC BLOOD ANALYSER AND RELATED EQUIPMENT (HB, BLOOD COUNT, BLOOD BIOCHEMISTRY, ETC)	1	TURKEY
BIOCHEMISTRY DEVICE	1	TURKEY
MICROSCOPE	2	TURKEY
CENTRIFUGE	1	TURKEY
URINALYSIS KIT	1	TURKEY
INCUBATOR	1	TURKEY
SUPPLIES (TUBES, REAGENTS, ETC)	1	TURKEY
GLUCOMETER	1	TURKEY
REFRIGERATOR	1	TURKEY
FREEZER	1	TURKEY
COMPUTER, CHAIRS, DESK AND DRAWERS	1	TURKEY



MADE IN TÜRKİYE

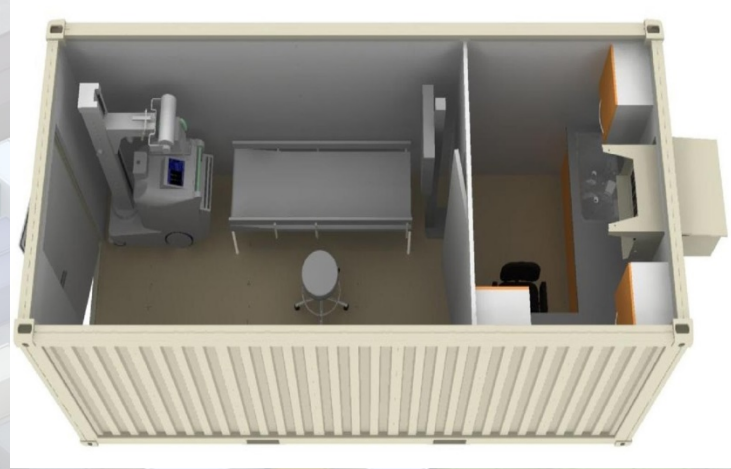
07 – RADIOLOGY UNIT

07 – RADIOLOGY UNIT (40 FEET CONTAINER)

FLOOR	PVC 2 mm Anti bacterial-Static
WINDOW	PVC Double Glassed Window
A / C	Air Conditioner
LIGHTING	2 lamps (2x36W each) Waterproof/Dust Proof Housing
SMOKE DETECTOR, FIRE EXTINGUISHER,	

EQUIPMENT	QTY	ORIGIN
PORTABLE X-RAY MOBILE-DIGITAL-X-RAY DIGITAL	1	TURKEY
UTILITY TROLLEY	1	TURKEY
LEAD APRON WITH RACK	1	TURKEY
PROTECTIVE EQUIPMENT	1	TURKEY
STRETCHER FOR X-RAY	1	TURKEY
FOLDING SCREEN	1	TURKEY
COMPUTER, CHAIRS, DESK AND DRAWERS	1	TURKEY

X-Ray divided into two parts. Radiology part is covered with 1 mm lead all over the walls, ceiling and floors.



08- ENDOSCOPY UNIT

08 – ENDOSCOPY (40 FEET CONTAINER)	
FLOOR	PVC 2 mm Anti bacterial-Static
WINDOW	PVC Double Glassed Window
A / C	Air Conditioner
LIGHTING	2 lamps (2x36W each) Waterproof/Dust Proof Housing
SMOKE DETECTOR, FIRE EXTINGUISHER,	



EQUIPMENT	QTY	ORIGIN
ENDOSCOPY DEVICE	1	TURKEY
PORTABLE O ₂ CYLINDER	1	TURKEY
ENDOSCOPY BEDS AND RELATED EQUIPMENTS	1	TURKEY
FULL TROLLEY FOR ENDOSCOPY	1	TURKEY
THERMOMETERS	2	TURKEY
ENDOSCOPY WASHING DEVICE- DRYER CABINET	1	TURKEY
SPHYGMOMETERS	2	TURKEY
PULSE OXIMETER	1	TURKEY
TORCH	2	TURKEY
COMPUTER, CHAIRS, DESK AND DRAWERS	1	TURKEY



13 – TOMOGRAPHY

13 – TOMOGRAPHY UNIT (20 FEET EXPANDABLE CONTAINER)

FLOOR	PVC 2 mm Anti bacterial-Static
WINDOW	PVC Double Glassed Window
A / C	Air Conditioner
LIGHTING	2 lamps (2x36W each) Waterproof/Dust Proof Housing
SMOKE DETECTOR, FIRE EXTINGUISHER,	

EQUIPMENT	QTY	ORIGIN
TOMOGRAPHY-DİGİTAL DEVICE	1	TURKEY
UTILITY TROLLEY	1	TURKEY
LEAD APRON WITH RACK	1	TURKEY
PROTECTİVE EQUIPMENT	1	TURKEY
STRETCHER FOR X-RAY	1	TURKEY
FOLDİNG SCREEN	1	TURKEY
COMPUTER, CHAIRS, DESK AND DRAWERS	1	TURKEY



Tomography and MR divided into two parts. Radiology part is covered with 1 mm lead all over the walls, ceiling and floors.

14 – ULTRASOUND UNIT

14 – ULTRASOUND UNIT (40 FEET CONTAINER)	
FLOOR	PVC 2 mm Anti bacterial-Static
WINDOW	PVC Double Glassed Window
A / C	Air Conditioner
LIGHTING	2 lamps (2x36W each) Waterproof/Dust Proof Housing
SMOKE DETECTOR, FIRE EXTINGUISHER,	

EQUIPMENT	QTY	ORIGIN
ULTRASON DEVICE	1	TURKEY
UTILITY TROLLEY	1	TURKEY
STRETCHER	1	TURKEY
FOLDING SCREEN	1	TURKEY
COMPUTER, CHAIRS, DESK AND DRAWERS	1	TURKEY



Ultrason divided into two parts. Radiology part is covered with 1 mm lead all over the walls, ceiling and floors.

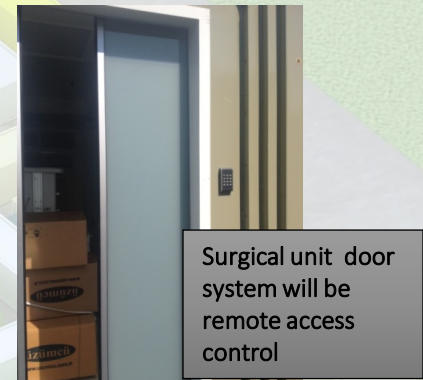


16- SURGERY UNIT

16 –SURGERY UNIT (40 FEET CONTAINER) 70 meter square

FLOOR	PVC 2 mm Anti bacterial-Static
WINDOW	PVC Double Glassed Window
A / C	Air Conditioner
LIGHTING	2 lamps (2x36W each) Waterproof/Dust Proof Housing
SMOKE DETECTOR, FIRE EXTINGUISHER,	

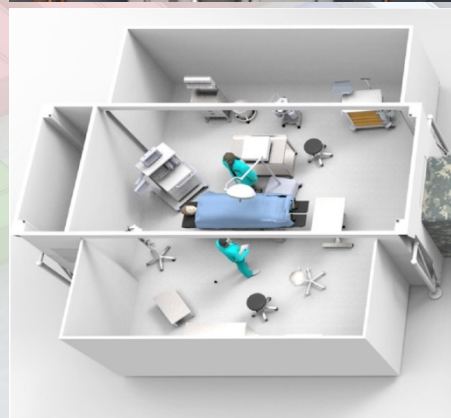
EQUIPMENT	QTY	ORIGIN
OPERATING TABLE-ELECTRICAL	1	TURKEY
OPERATING LAMPS-CEILING TYPE	1	TURKEY
ANAESTHESIA MACHINE & MONITOR	1	TURKEY
VITAL SIGNS MONITOR	1	TURKEY
ECG MACHINE	1	TURKEY
DEFIBRILLATOR	1	TURKEY
ELECTROCAUTERY	1	TURKEY
INFUSION & SYRINGE PUMP SET	2	TURKEY
INSTRUMENTS TABLE	1	TURKEY
MEDICAL WASTE BOX	1	TURKEY
SUCTION DEVICE	1	TURKEY
GENERAL PURPOSE INSTRUMENT SET	1	TURKEY
MINOR SURGICAL SET	1	TURKEY
ORTHOPAEDIC SET	1	TURKEY
TROLLEY FOR OPERATING THEATRE	1	TURKEY
DESK AND DRAWERS	1	TURKEY



Surgical unit door system will be remote access control



Surgical UNITS have medical gasses (O2, N2, vacuum), hygenic air-conditioning, ventilation with hepa filtration



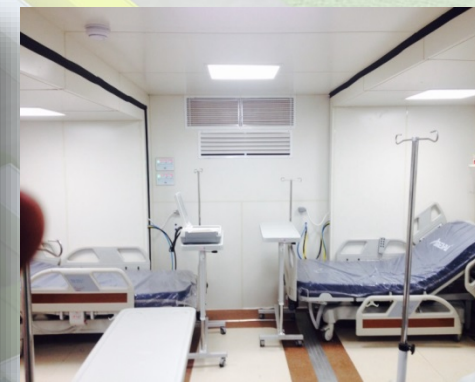
MADE IN TÜRKİYE



19- INTENSIVE CARE UNIT

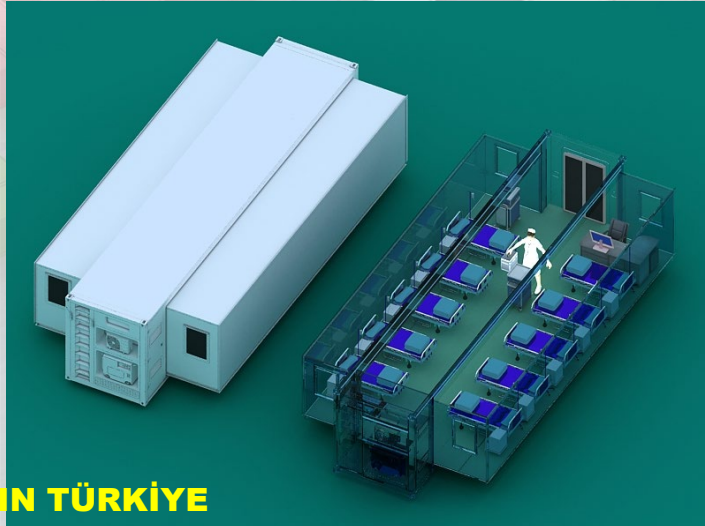
19 – INTENSIVE CARE UNIT (40 FEET CONTAINER)	
FLOOR	PVC 2 mm Anti bacterial-Static
WINDOW	PVC Double Glassed Window
A / C	Air Conditioner
LIGHTING	2 lamps (2x36W each) Waterproof/Dust Proof Housing
SMOKE DETECTOR, FIRE EXTINGUISHER,	

EQUIPMENT	QTY	ORIGIN
ICU BED WITH MATTRESSES	24	TURKEY
VENTILATOR	24	TURKEY
PORTABLE VENTILATOR	5	TURKEY
VITAL SIGNS MONITOR	24	TURKEY
FULL TROLLEY FOR ICU	4	TURKEY
ECG DEVICE and DEFIBRILLATOR	8	TURKEY
THERMOMETERS	24	TURKEY
SPHYGMOMETERS	24	TURKEY
NEBULIZER	24	TURKEY
PULSE OXIMETER	24	TURKEY
INFUSION & INJECTION PUMP	24	TURKEY
SUCTION UNIT	24	TURKEY
CONIOTOMY SET	12	TURKEY
PORTABLE O ₂ CYLINDER	12	TURKEY
COMPUTER, CHAIRS, DESK AND DRAWERS	4	TURKEY



ICU Covid-19 UNITS have medical gasses (O₂, N₂, vacuum), hygenic air-conditioning, ventilation with hepa filtration

ICU door system will be remote access control



MADE IN TÜRKİYE





ZESA DEFENSE TECHNOLOGIES
HIGH DEFINITION MULTI-SENSOR
THERMAL & LASER CAMERA SYSTEM



HIGH DEFINITION MULTI-SENSOR THERMAL & VISIBLE & LASER CAMERA SYSTEM

- High Definition Multi-sensor Night Vision System is the night vision product with independent intellectual property right, which integrates infrared thermal imaging camera and color camera. It adopts thermal imaging night vision technology, with features such as clear image, good concealment and being not limited by light source. Color camera and thermal imaging camera integrate effectively, the day vision distance of color camera 10km, night vision distance 4km and the detection distance to human of thermal imaging camera 5.6km, realizing day and night continuous monitoring.

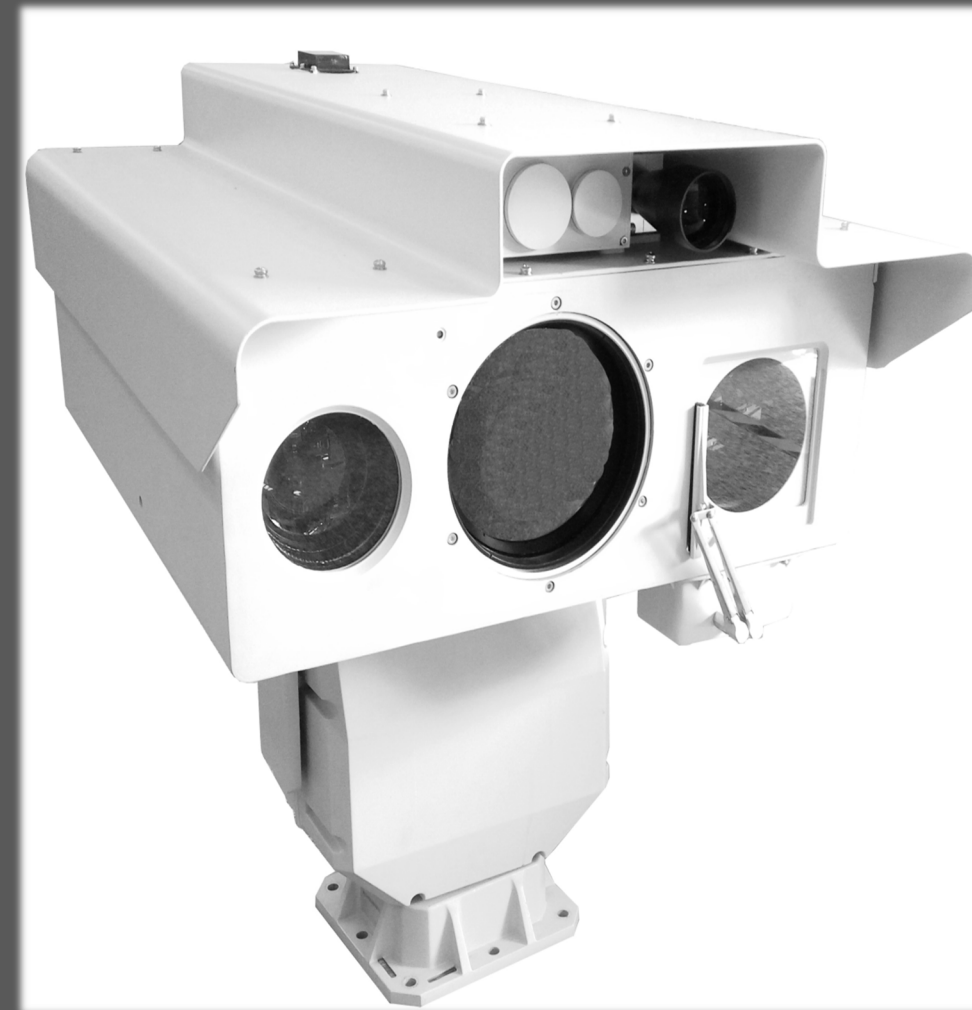


MADE IN TÜRKİYE



HIGH DEFINITION MULTI-SENSOR THERMAL & VISIBLE & LASER CAMERA SYSTEM

- Long range visible light camera and thermal imaging camera integrating design, realizing day and night monitoring
- Uncooled microbolometer infrared focal plane arrays, 640*512 pixel with 36~180mm,5x continuous zoom lens.
- High sensitivity, NETD at 50mk, 25Hz
- 10km Laser Range Finder, With GPS, Auto-tracking Function
- 4km Laser Illuminator
- Day&night mode, low illuminance, color to black camera
- Universal, variable speed pantilt, realizing all-around, no-blind-corner monitoring and high precision location
- Simple to operate, easy to use and maintain
- Integrated intelligent temperature controlling system, making sure electronic device inside the housing work normally 24/7
- Passive infrared thermal imaging, good concealment, not easy to be perceived
- Professionally designed housing, artistic, light, solid, high temperature resistant, anti-corrosion, water-proof, anti-acid rain
- Low power consumption, little heat generation, stable working performance



MADE IN TÜRKİYE



ZESA DEFENSE TECHNOLOGIES

**TRAFFIC CONTROL AND ARMORED
BLOCK SYSTEM EQUIPMENT**

PORTABLE ROAD BLOCKER

- It is used to provide controlled passage of vehicles at the Security and Control points of Military Units, institutions, hotels, sites, factories and shopping malls.
- It does not require excavation, excavation, construction. 1 hour to assemble, 15 minutes to disassemble.
- Vehicle transitions are easily managed by remote control. With the camera on it, the license plate of the vehicle and the bottom image of the vehicle passing over it are transferred to the monitor at the control point.
- If the vehicle entering the Road Blocker does not stop, it is inevitable that it will be damaged.
- Road Blocker It is a crusher and shredder for the vehicle. It is stuck to the main working and walking mechanism such as the entire front arrangement, engine, wheel, gearbox, front axle of the vehicle that tries to pass over the crusher piles.
- Road Blocker removes and parts all installed evenings.



TRAFFIC CONTROL EQUIPMENT





ARMOR AND OBSTACLE SYSTEMS



MADE IN TÜRKİYE